

TREIMER REALTY, LLC

Phone 712-928-2449 • 1-800-865-1761 • Fax 712-928-2910
91 Third St. NW • P.O. Box 58 • Hartley, IA 51346

Marjean R. Westerman, Broker

David W. Treimer, Salesperson

William V. Treimer, Broker Associate

Rachel Wilson, Salesperson

Megan Gable, Salesperson

Korrie Anderson, Salesperson

351 w Maple Dr. – Hartley, IA

4 BR/ 2 Full Baths / 2 Half Baths

Taxes: \$3,984

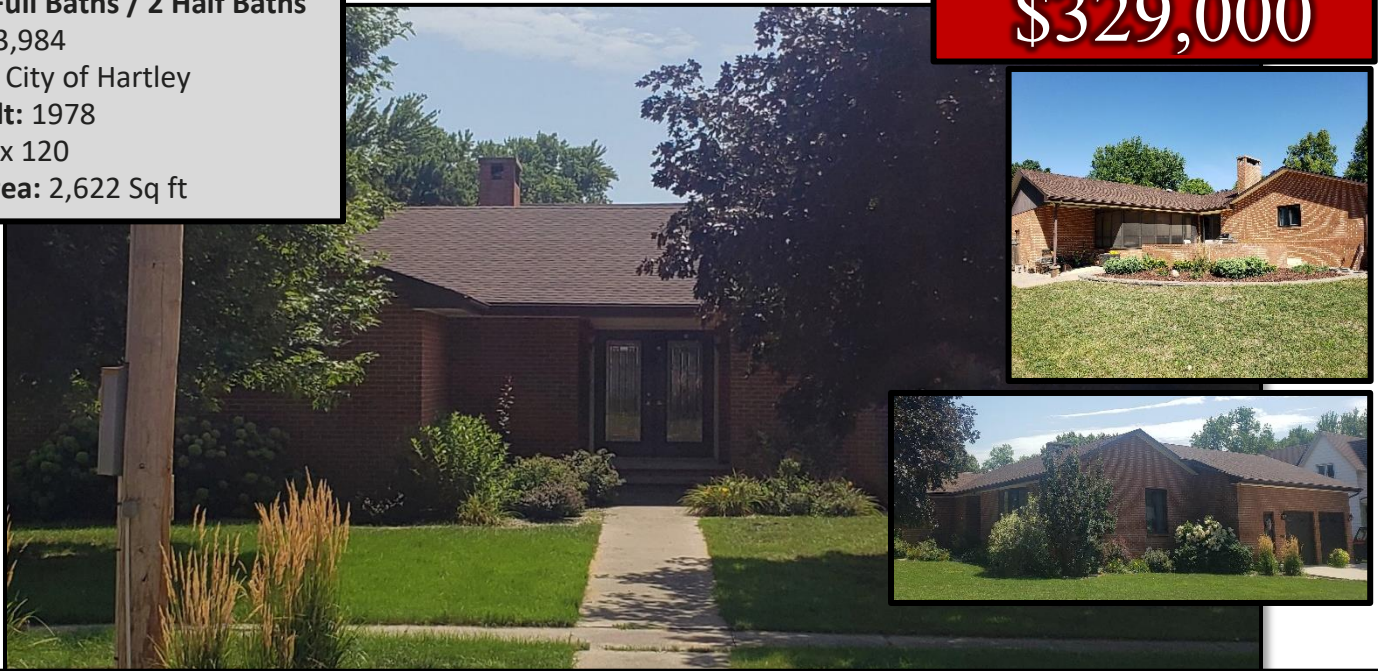
Utilities: City of Hartley

Year Built: 1978

Lot: 130 x 120

Living Area: 2,622 Sq ft

\$329,000



4 BR / 2 full & 2 Half Bath | Come see this beautiful brick home on a large corner lot. So much living space in over 2,500 square feet all on one level with four bedrooms, three bathrooms, and laundry all upstairs. Invite family and friends over to entertain in the open kitchen, three season room and fenced in backyard, or head downstairs to the huge family room with gorgeous custom bar. You'll find many quality improvements already done and ready to move in. Some updates include; new windows, updated bathrooms, and fresh paint.

You'll be ready to cozy up to the fireplace this winter in your new home!



Viewing By Appointment Only

Treimer Realty LLC | 712.928.2449 | www.treimers.com

TREIMER REALTY, LLC

Marjean R. Westerman, Broker

Phone 712-928-2449 • 1-800-865-1761 • Fax 712-928-2910

91 Third St. NW • P.O. Box 58 • Hartley, IA 51346

David W. Treimer, Salesperson

William V. Treimer, Broker Associate

Rachel Wilson, Salesperson

Megan Gable, Salesperson

Korrie Anderson, Salesperson

351 w Maple Dr. – Hartley, IA



Information:

Basement | Partially Finished

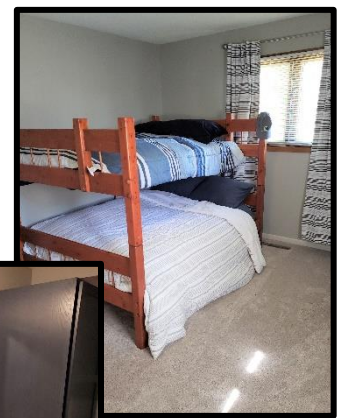
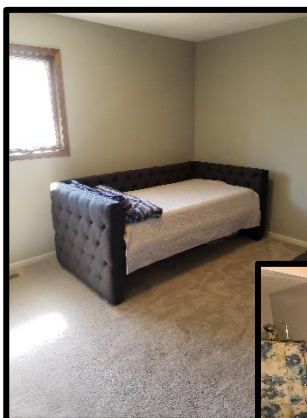
Main Floor

- Kitchen
- Sitting area with woodburning fireplace
- Dining Room
- Three Season Room
- Master bed w/ bath
- 3 Bedrooms
- 1 Full Bath/1 Half Bath
- Laundry area

- Family Room
- Bar Area
- Custom Closets
- Storage Room

General

- Gas Furnace
- Central Air
- Radon Mitigation System
- Stainless Steel Appliances



Viewing By Appointment Only

Treimer Realty LLC | **712.928.2449** | www.treimers.com